

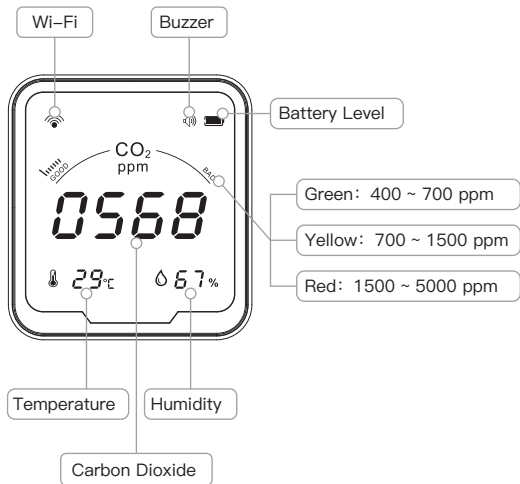
Instruction Manual

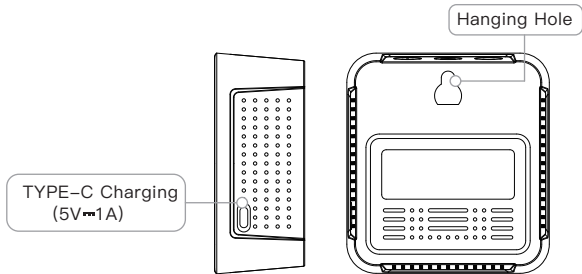
WiFi CO₂ T&H Detector



English

Product Introduction





Specification

Carbon Dioxide Range: 400 ~ 5000 ppm [\pm (50ppm + 5%)]

Temperature Range: $-10^{\circ}\text{C} \sim 40^{\circ}\text{C}$ ($\pm 2^{\circ}\text{C}$) / $14^{\circ}\text{F} \sim 104^{\circ}\text{F}$ ($\pm 3.6^{\circ}\text{F}$)

Humidity Range: 20 ~ 80 % RH (± 5 % RH)

Product Size: 98 x 90 x 40 mm

Power Supply: Built-in Lithium Battery (2400mAh)

Wireless Connection: Wi-Fi (only for 2.4GHz Wi-Fi network)

Input: 5V=1A

Packing List:

PTH-9CW x 1 ; User Manual x 1 ; TYPE-C Charging Cable x 1

Operation

Press to turn on/off the backlight in the normal mode, or to minus one in the setting mode. Long press to enter or disconnect the network configuration state.

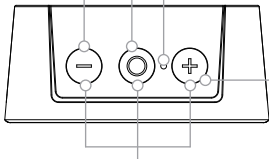
Double click it to custom CO₂ alarm threshold.

Long press it to turn on or off.


Press it to reset with a pointed object.

Press to switch °C or °F in the normal mode, or to plus one in the setting mode.

Long press it to turn on or off the buzzer.



After powering off, long press the 3 buttons to enter calibration mode then the device begins to count down 200s on the screen. Pay attention to doing it outdoors without people.

Note: When the carbon dioxide concentration value exceeds 1500ppm, and when the buzzer is on, the buzzer will sound an alarm. Long press “” button to stop the alarm.

Customize Sound Alarm Value

Tips:

You can customize the sound alarm value for this meter.

How to set the sound alarm value?

Double click “⊕” to enter the setting. Then click “⊕” or “⊖”. Click “⊙” to confirm setting and go back to home page.

How to connect to the app

① Download MOES App on App store or scan the QR code.

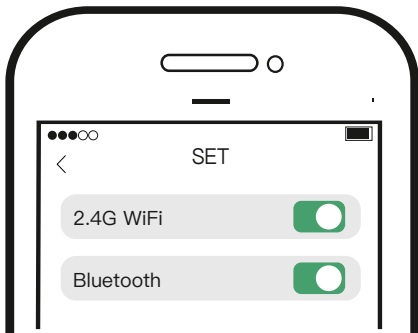


Moes application is much more compatible than Tuya smart / smart life application. It also provides a new customized service for controlling scenes through Siri, widgets and scene recommendation. (Note: Tuya smart / Smart Life app is still working, but moes app is highly recommended)

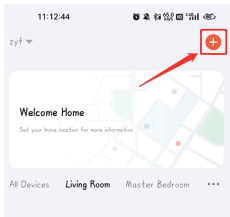
② Registration or Log in.

- Download “MOES” Application.
- Enter the Register/Login interface; tap “Register” to create an account by entering your phone number to get verification code and “Set password”. Choose “Log in” if you already have a MOES account.

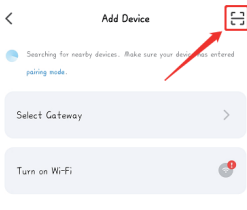
1. Make sure your phone is connected to Wi-Fi and Bluetooth.



2. Scan the QR code to configure the network guide.



①



②



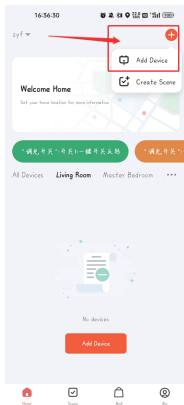
Scan this QR code



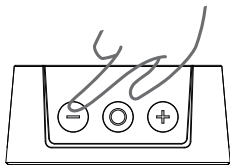
③

1. Please confirm you have enabled the phone Bluetooth, 2.4G WiFi and location service.



2. Open Smart Life APP,click “Add Device”on the home page or click the icon “+”on the top right.



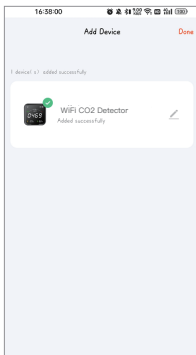
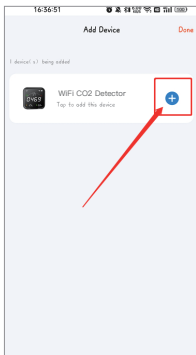
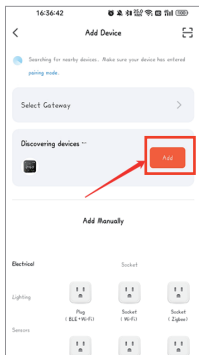
(2)



(3)

3. Long press the “” button until the “” icon flashes on the screen, and the device enters the network configuration state.

4. Click “Add” when searching devices, choose your 2.4G WiFi by entering password for clicking “Next” to wait for successful device adding.



5. Click “Done” and enter the device page to enjoy smart life with home automation.

Note:

1. Besides the “Auto Scan” mode, you can also click “Add Manually” and follow the path “**Sensors – CO2 Alarm – CO2 Detector (other)**” to click on the corresponding icon and operate as prompted on the interface.

2. During the connection process, it is necessary to ensure that the device and the mobile phone are within 30 meters during the connection process, as Wi-Fi is short-distance connection.

3. During the connection process, make sure that the device and the mobile phone are in the same Wi-Fi environment, and only support the 2.4GHz Wi-Fi signal mode.

Limited Warranty

Note:

1. Do not expose this product to water, nor place it in a high temperature environment exceeding 60°C, and keep it away from fire;

2. This product is a precision measuring instrument, and it is not allowed to disassemble the machine without authorization;

3.Can not be placed in an environment full of dust or corrosiv gas for measurement;

4.When measuring the environment in the car, please do not expose this product directly to the sun for a long time.

1 year warranty against any manufacturing defects or faulty workmanship. This warranty does not cover fuses, disposable batteries or damage from accident, neglect, misuse, alteration, contamination or abnormal conditions of operation or handling.

SERVICE

Thank you for your trust and support to our products, we will provide you with a two-year worry-free after-sales service (freight is not included), please do not alter this warranty service card, to safeguard your legitimate rights and interests. If you need service or have any questions, please consult the distributor or contact us.

Product quality problems occur within 24 months from the date of receipt, please prepare the product and the packaging, applying for after-sales maintenance in the site or store where you purchase; If the product is damaged due to personal reasons, a certain amount of maintenance fee shall be charged for repair.

We have the right to refuse to provide warranty service if:

1. Products with damaged appearance, missing LOGO or beyond the service term
2. Products that are disassembled, injured, privately repaired, modified or have missing parts
3. The circuit is burned or the data cable or power interface is damaged
4. Products damaged by foreign matter intrusion (including but not limited to various forms of fluid, sand, dust, soot, etc.)

RECYCLING INFORMATION

All products marked with the symbol for separate collection of waste electrical and electronic equipment (WEEE Directive 2012 /19 / EU) must be disposed of separately from unsorted municipal waste. To protect your health and the environment, this equipment must be disposed of at designated collection points for electrical and electronic equipment designated by the government or local authorities.

Correct disposal and recycling will help prevent potential negative consequences for the environment and human health. To find out where these collection points are and how they work, contact the installer or your local authority.



WARRANTY CARD

Product Information

Product Name _____

Product Type _____

Purchase Date _____

Warranty Period _____

Dealer Information _____

Customer's Name _____

Customer Phone _____

Customer Address _____

Maintenance Records

Failure date	Cause Of Issue	Fault Content	Principal

Thank you for your support and purchase at we Moes,we are always here for your complete satisfaction,just feel free to share your great shopping experience with us.



If you have any other need,please do not hesitate to contact us first,we will try to meet your demand.

FOLLOW US

 MOES.Official

 @moessmart

 @moes_smart

 @moes_smart

 @moes_smart

 www.moes.net



EVATOST CONSULTING LTD

Address: Suite 11, First Floor, Moy Road
Business Centre, Taffs Well, Cardiff, Wales,
CF15 7QR

Tel: +44-292-1680945

Email: contact@evatmaster.com



AMZLAB GmbH

Laubenhof 23, 45326 Essen

Made In China



Manufacturer:

WENZHOU NOVA NEW ENERGY CO.,LTD

Address: Power Science and Technology Innovation
Center, NO.238, Wei 11 Road, Yueqing Economic
Development Zone, Yueqing, Zhejiang, China

Tel: +86-577-57186815

After Service Email: service@moeshouse.com